

**ShinewayTech**® MTP-200 series are the compact multi-functional platform, which are specially designed for FTTx/WAN applications and can meet all test requirements of installers, contractors and service operators during network installation, construction, maintenance and troubleshooting. It is convenient and accurate for auto/manual testing, multi-wavelength testing and multifunctional analysis.



**ShinewayTech**®

Hand-held High Performance OTDR

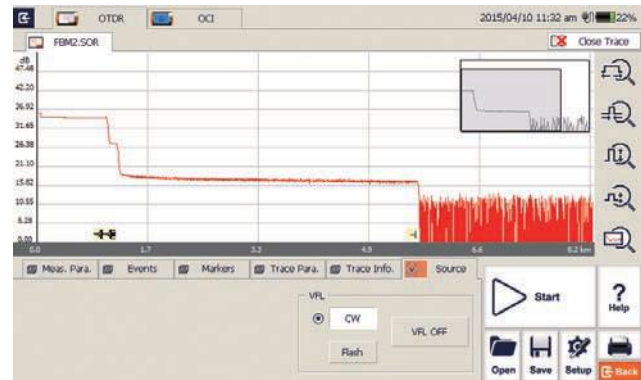
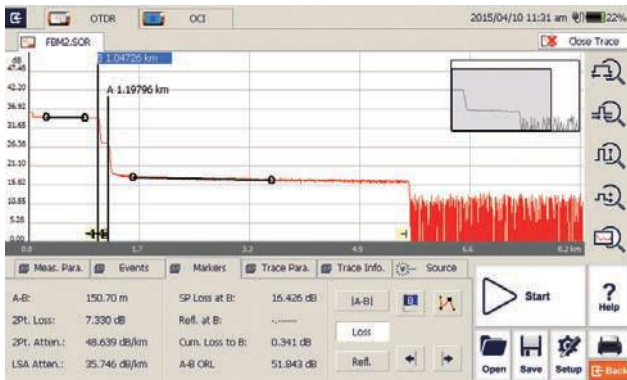
**MTP-200**  
**Series**

## Multi-Function and High Performance OTDR Testing

- (1) Dynamic Range up to 50dB
- (2) Short zone: EDZ 0.8m, ADZ 4.5m
- (3) Auto/Manual test and analysis
- (4) Multi-wavelength testing
- (5) Visible laser source function
- (6) In-Line test and through Splitter test (1625/1650nm with filter)
- (7) OTDR Module up to four wavelengths, SM/MM Option
- (8) Fault locating, fiber length/loss/return loss measurement, connector/ splice/ splitter/ macro bend/fiber-end detection
- (9) LAN/WAN/FTTx application
- (10)GR-196-CORE (.SOR) file format
- (11)SOR and JPG file format
- (12)Flexible file Naming

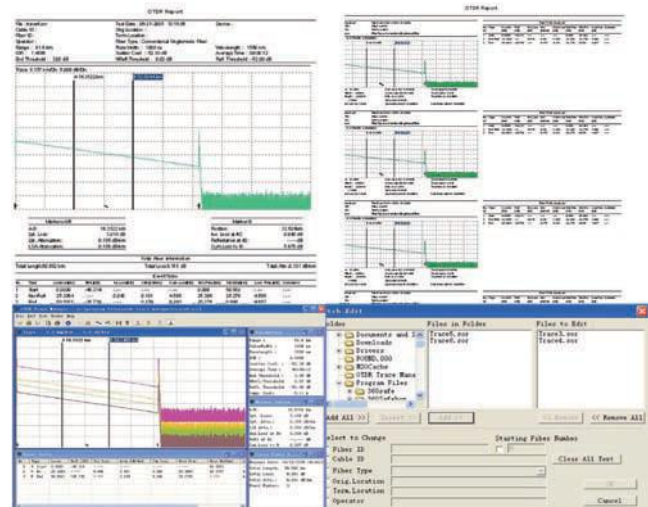
## Optimized Platform Performance

- (13)Lightweight, 2.1kg
- (14)7 inch touch screen
- (15)High strength protect horn
- (16)Excellent Man-Machine interface for easy operation
- (17)Damp-dust-shock proof
- (18)Optimized power management: 10 hours continuous operation
- (19)Fast power up and off with Windows CE
- (20)Direct printing function(compatible with PCL printers)
- (21)Remote/local control by PC



## MTP Suite PC Software

- (22)Multi traces analysis
- (23)Single/multi traces printing in one report
- (24)Batch editing and printing
- (25)Bidirectional traces analysis
- (26)CSV report formats
- (27)Remote control function



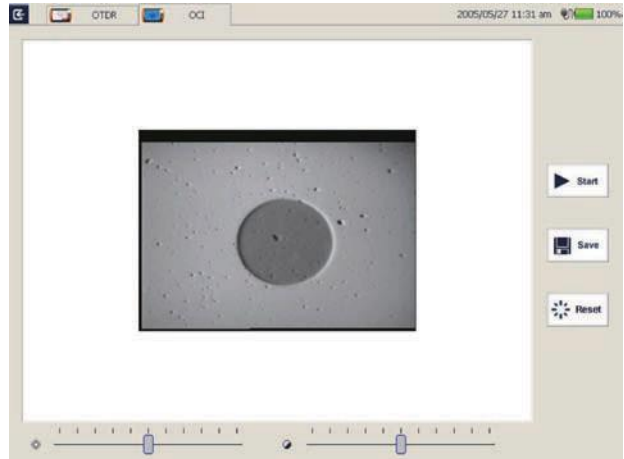
## Network Remote Control Module (optional)

- (28) Convenient networking
- (29) Remote control instrument operation



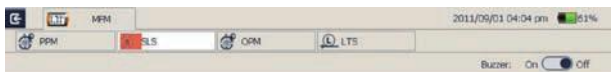
## Optical Connector Inspector Module (optional)

- (35) Focusing knob for fast focus
- (36) Eye-safe and clear video viewing
- (37) Interchangeable connector tips



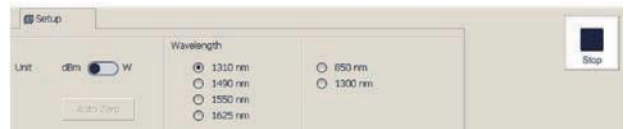
## Stabilized Laser Source Module (optional)

- (30) Wavelength same as the OTDR
- (31) High precision and easy operation



## Optical Power Meter Module (optional)

- (38) Multi-wavelength Calibration
- (39) High Precision
- (40) Convenient Operation



## Applications

- (32) Installation Stage
- (33) Service Deployment
- (34) Maintenance Stage

## Specifications

MTP-200 Series	
Display	7 inch TFT Touch Screen (800×480)
Connectivity	USB×2; 10/100Mbit/s RJ-
Memory	2GB
Power Supply	Rechargeable Li-Ion Battery/AC Adapter
Battery Life	10 hours continuous
Working Temp.	-20°C - 50°C
Storage Temp.	-40°C - 60°C
Humidity	0 - 95% (Non-Condensing)
Weight	2.1kg
Dimensions (L×W×H)	290×175×75mm

OTDR Module	Wavelength (±20nm)	Dynamic Range (dB) <sup>(1)</sup>	EDZ (m) <sup>(2)</sup>	ADZ(m) <sup>(2)</sup>
MTP-200-20VC	1310/1550	38/37	0	4
MTP-200-20VD	1310/1550	45/43	0	4
MTP-200-20VF	1310/1550	50/48	0	4
MTP-200-31VCPL	1310/1550/1625	43/41/	0	4
MTP-200-33VC	1310/1550/1650	42/40/39	0	4
MTP-200-40VC	850/1300/1310/1550	23/28/38/36	1	4.5/4.5/4/
Selectable Range	SM: 1.3, 2.5, 5, 10, 20, 40, 80, 160, 240Km MM: 1.3, 2.5, 5, 10, 20,			
Pulse Width	SM: 5ns,10ns, 30ns, 100ns, 300ns,1μs, 2.5μs,10μs, 20μs MM: 5ns, 10ns, 30ns, 1μs, 2.5μs			
Averaging Time	Quick, 15s, 30s, 45s, 60s, 90s, 120s, 180s			
Emitter Type	LD			
Connector	FC/PC (Interchangeable SC, ST and LC )			
Distance Measure Accuracy	±(1m + 10 <sup>-5</sup> ×distance + sampling spacing)			
Attenuation Detect Accuracy	±0.05 dB/dB			
Reflection Detect Accuracy	±4 dB			
Visible Laser Source	Output Power: ≥-3dBm	MOD Frequency: 1Hz	Detecting Range: 5Km	

MCI100 Optical Connector Inspector Module (Optional)	
Field of View	400μm×300μm
Resolution	≤1.5μm
Focusing	Manual Focus
Microscope Dimensions	Ø32×175mm

LS100 Stabilized Laser Source (Optional)	
Wavelength (±20nm)	Same as OTDR's
Output Power	≥-7dBm

PM100 Normal Power Meter Module (Optional)	
Calibrated	850nm, 1300nm, 1310nm, 1490nm, 1550nm, 1625nm, 1650nm
Measurement	-70dBm - +6dBm (-60dBm - +6dBm @ 850nm)
Detector Type	InGaAs
Display Resolution	0.01dB
Accuracy	$\pm 5\% \pm 0.01\text{nW}$ ( $\pm 0.5\text{dB}@850\text{nm}$ )

\*Specifications subject to change without notice

#### Notes

- Dynamic range measurement at 20 $\mu\text{s}$  pulse width and 180s averaging time;
- Dead Zone measurement at 0.6Km and reflection <-45dB; EDZ measurement at 5ns, ADZ measurement at 10ns.

### Order Information:

#### Standard Package

MTP-200 Host, Lithium Battery, CD, Software, Data Cable, Carrying Case, Warranty card, Calibration Certificate

#### Optional Module:

LS100: Stabilized Laser Source Module (as OTDR)

PM100: Optical Power Meter Module

MCI100: Optical Connector Inspector Module

RC100: Remote control Module

LM100: Link Image Module

---

**ShinewayTech**

Add.: Fl.7, Zhongtai Plaza, No.3 Shuangqing Rd, Haidian District, Beijing 100085, China  
Tel: +86 10 62953388 Fax: +86 10 62958572  
Email: support@shinewaytech.com Website: www.shinewaytech.com

