

# AutoGet WiFi-MT Intelligent Wireless Fiber Visual Inspector



## FEATURES

- All-in-one Design
- Fold-able & Flexible
- Convenient MT Adaptor
- Simple, Smart and Precise

### All-in-one Design

Based on Linux platform, AutoGet WiFi-MT works individually with a built-in 3.2" high density touch screen. Engineers at different skill levels can inspect and analyze MT

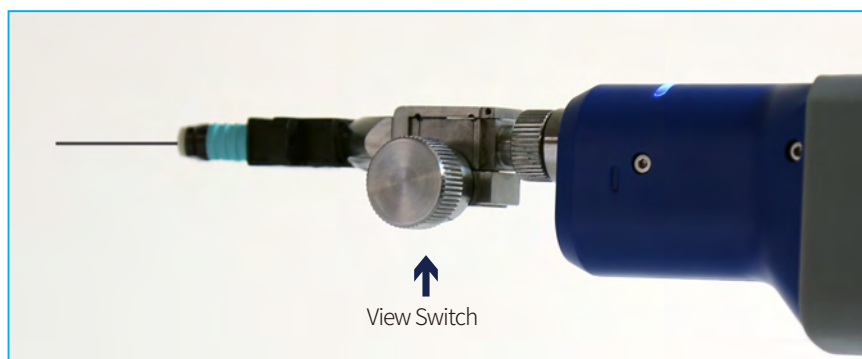
end face with the portable microscope. No third party tools are required.

### Fold-able & Flexible

With unique rotational axis structure, AutoGet WiFi-MT can be used in straight or be folded to measure devices at different heights and in different conditions.

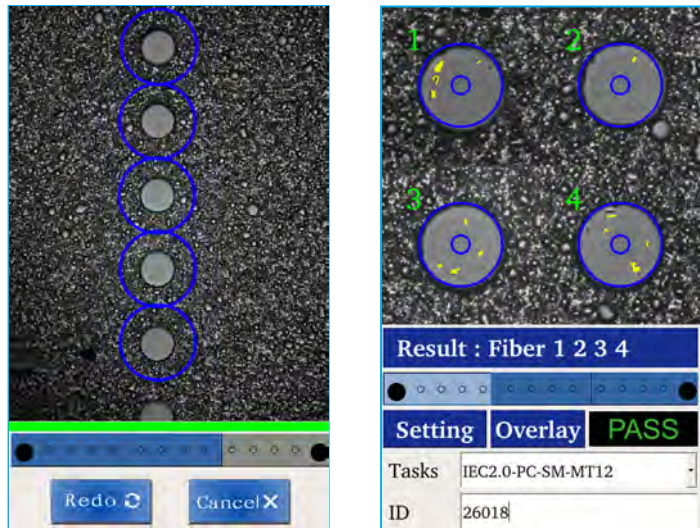
### Convenient MTP Adaptor

AutoGet WiFi-MT selects the fiber channels of MT devices in a simple and creative way. Fiber channels can be previewed, measured and displayed in group.

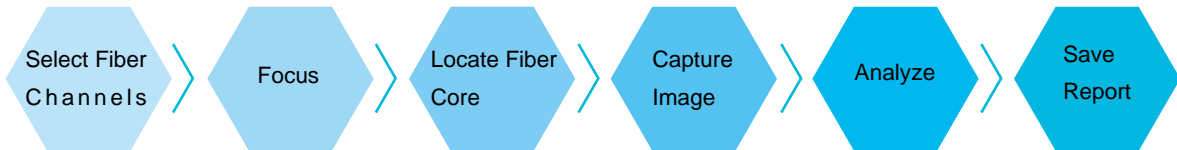


## Simple, Smart and Precise

With the help of Dimension's KNOW-HOW on fiber end face Image processing, AutoGet WiFi-MT identifies the fiber core and focuses automatically. Following IEC standard or customized standard. AutoGet WiFi-MT analyzes the fiber end face and saves the testing result and report for process improvement.



## AutoGet WiFi-MT Procedures for Measurement



## Specifications

Items	MT Adaptor	Single Channel Adaptors
Resolution	0.92 $\mu\text{m}$	0.52 $\mu\text{m}$
Image Sensor	1/1.8" COMS	
Optical Magnification	X5	X8.72
Monitor	480X800 3.2" Touch Screen	
Frame Rate	25fps	
Field of View	1440 $\mu\text{m}$ X 1100 $\mu\text{m}$ (Preview) 220 $\mu\text{m}$ X 220 $\mu\text{m}$ (Measurement)	620 $\mu\text{m}$ X 620 $\mu\text{m}$ (Preview) 250 $\mu\text{m}$ X 250 $\mu\text{m}$ (Measurement) 130 $\mu\text{m}$ X 130 $\mu\text{m}$ (Fiber Core Mode)
Digital ZOOM	—	3 Levels
Light Source	2 LED (Blue)	
Light Mode	Coaxial	
Signal Output	WiFi, USB Type C	
Power	Li-ion Battery (rechargeable, replaceable)	
Duration Time	6 Hours	
Recharge Time	$\leq$ 3hour (current=2A)	
Charger	5V/2A USB DC Adaptor, with plugs for US, EU, UK and AU.	
AUX Functions	White LED for illumination, PASS/FAIL Indicator, 60° Fold-able Body	
Working Temperature	-5° C ~ +40° C	
Storage Temperature	-20° C ~ +55° C	
Humidity	< 90% (Non Condensing)	
Weight	565g	
Size (H*W*D)	281mm X 201mm X 57mm (Folded) 341mm X 67mm X 57mm (Straight)	

